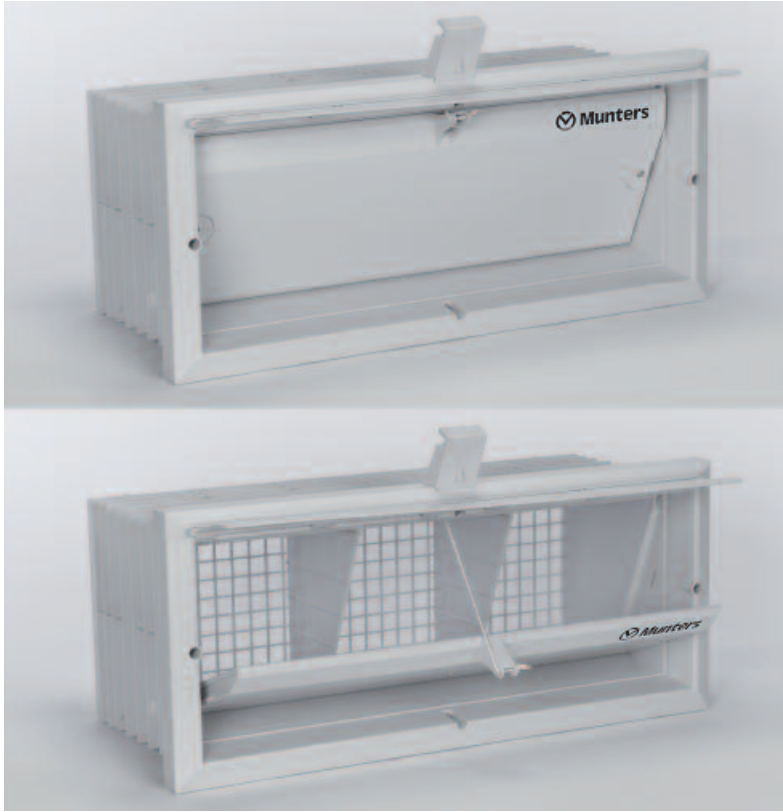


# IW

## Air Inlet



IW air inlets are designed to be used as wall mounted air inlets in livestock structures.

A critical time for ventilation of livestock structures is during cold periods, when it is necessary to ventilate the structures to supply fresh air to the animals without causing cold drafts over them, a process commonly known as minimum ventilation. The only way of performing minimum ventilation effectively is by directing the cold fresh air along the ceiling of the structure so that it can mix thoroughly with the hot air inside the structure before it descends into the occupied zone of the animals and replaces the stale air. Failure to perform minimum ventilation effectively could cause a build-up of noxious gases, such as ammonia or carbon dioxide, inside the structure; or, a fatal reduction in oxygen levels.

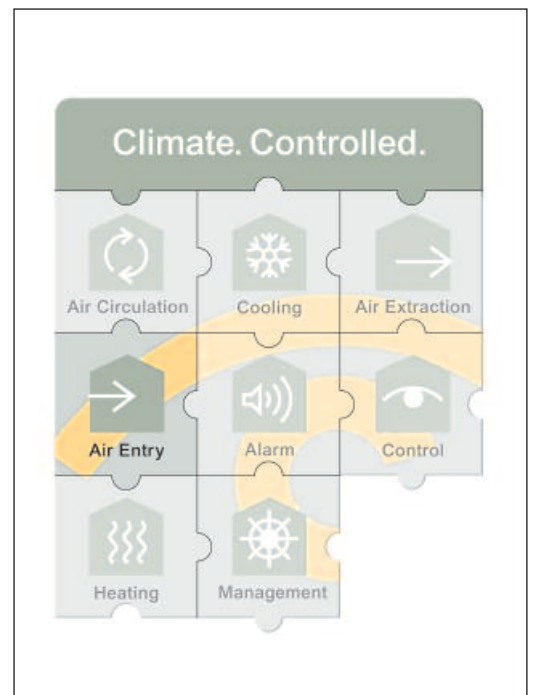
Another problem commonly associated with ineffective minimum ventilation is cold air dropping onto the animals, causing wet litter and disturbing animal behaviour. The IW air inlets are designed to perform minimum ventilation perfectly; maintaining a healthy environment for the animals without disrupting normal animal behaviour.

During warmer periods the emphasis of ventilation shifts towards heat removal and cooling of the animals. In such conditions the air entering the structure can be directed downwards towards the animals, allowing heat removal from the animals' skins through a wind chill process. Once again the IW can be adjusted to ensure that the air reaches the animals.

## PRODUCT INFORMATION

### IW

- Easy installation
- Manufactured in durable white UV stabilized polystyrene
- Different models with depths ranging from 150 mm to 350 mm
- Main door moulded in two pieces preventing deformation
- Main door has an insulated core, preventing condensation on inside
- Integrated aluminium profiles in main door preventing warping
- Adjustable flap allowing fine adjustment of air flow patterns
- Rainstop preventing rain from entering the structure
- Integrated mesh in corrosion resistant polystyrene preventing wild animal entry
- Withstands cleaning with a high pressure cleaner
- Integrated pulley for support of cabling



## Optimised technology: Added benefits

With the use of top grade polystyrene it is possible to maintain hygienic conditions around the animals since the polystyrene has anti soiling properties; is high pressure cleanable; is corrosion resistant; maintains its physical properties for many years; and will withstand temperature extremes and UV radiation.

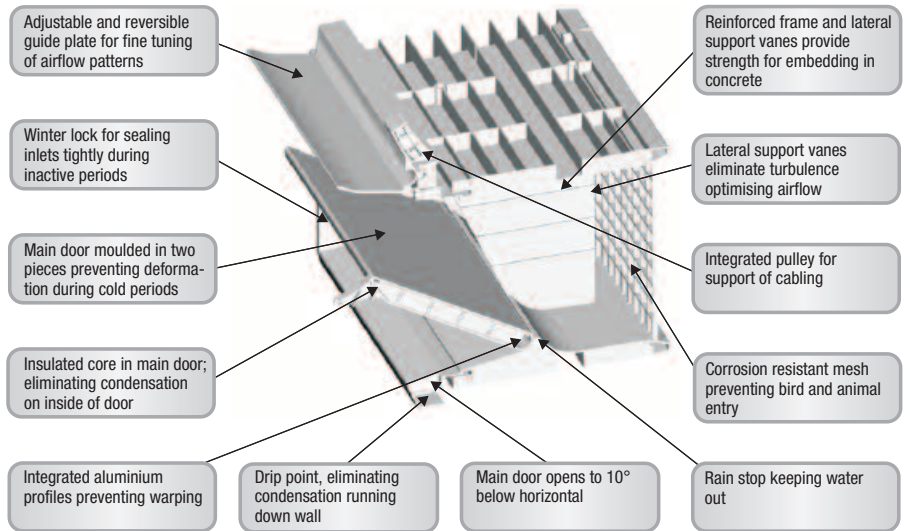
To further prevent possible disease spreads the IW air inlets have an integral mesh, preventing the entry of wild birds and animals into the structures.

The design of the IW air inlet allows for the precise adjustment of the air distribution pattern to ensure animal comfort at all times. With the adjustable top flap the airflow patterns for minimum ventilation can be adjusted according to the design of the structure while the insulated main door can be automatically opened and closed to adjust the ventilation rate. The main door can open to 10° below the horizontal, effectively directing air downwards towards the animals during hot periods.

Safety is always an important consideration and therefore the main door opens under gravity, a feature that makes emergency ventilation easily possible in case of power failure.

## The perfect package

IW air inlets can be combined with other products from Munters, such as the LA32 actuator system; Euroemme® extraction fans; LFD light filters; Sial® heaters and climate controllers to obtain the perfect climate control package.



Several IW Air inlets mounted into a poultry house.

IW Air inlet is developed and produced by Munters Turbovent A/S, Denmark.



Munters, HumiCool Division, Kung Hans Väg 8, P.O. Box 434, SE-191 24 Sollentuna, Sweden. Phone +46 8 626 63 00, Fax +46 8 754 56 66.

Munters Italy S.p.A., Strada Piani 2, IT-18027 Chiusavecchia, Italy. Phone +39 0183 52 11, Fax +39 0183 521 333.

[www.munters.com](http://www.munters.com)

**Australia** Munters Pty Limited, Phone +61 2 6025 6422, **Brazil** Munters Brasil Industria e Comercio Ltda, Phone +55 11 5054 0150, **Canada** Munters Incorporated, Phone +1 905 858 5894, **China** Munters Air Treatment Equipment (Beijing) Co., Ltd., Phone +86 10 80 481 121, **Denmark** Munters Turbovent, Phone +45 9862 3311, **Finland** Munters Oy, Phone +358 9 83 86 030, **France** Munters France S.A., Phone +33 1 34 11 57 50, **Germany** Munters Euroform GmbH, Phone +49 241 89 0 00, **India** Munters India, Phone +91 20 30522520, **Indonesia** Munters Phone +62 21 9105 446-7, **Italy** Munters Italy S.p.A., **Chiusavecchia** Phone +39 0183-52 11, Munters Italy S.p.A., **Mondovi** Phone +39 0174 560 600 **Japan** Munters K.K., Phone +81 3 5970 0021, **Kingdom of Saudi Arabia and Middle East** Hawa Munters, Phone +966 1 241 8808, **Korea** Munters Korea Co., Ltd, Phone +82 2 761 8701, **Mexico** Munters Mexico Phone +52 722 270 40 30, **Russia** Munters Europe AB, Phone +7 812 4485740, **Singapore** Munters Pte Ltd +65 744 6828 **South Africa and Sub-Sahara Countries** Munters (Pty) Ltd, Phone +27 11 971 9700, **Spain** Munters Spain S.A., Phone +34 91 640 09 02, **Sweden** Munters Europe AB, Phone +46 8 626 63 00, **Thailand** Munters (Thailand) Co. Ltd., Phone +66 2 645 2708-12, **United Kingdom** Munters Ltd, Phone +44 845 644 3980, **USA** Munters Corporation **Fort Myers** Phone +1 239 936 1555, Munters Corporation **Mason** Phone +1 888 335 0100, **Vietnam** Munters Vietnam Phone +84 8 825 6838 **Export & Other countries** Munters Europe AB, Phone +46 8 626 63 00.

Your closest distributor